

Portland Harbor Superfund Site Collaborative Group

AGENDA

Date: Wednesday, September 8, 2021

Meeting Time: 5:00 p.m. – 7:00 p.m.

Optional sections between 4:30 – 5:00 and 7:00 – 8:00 p.m.

Location: *Online Only*

Zoom Information:

Link: <https://us06web.zoom.us/j/87360487468>

Meeting ID: 873 6048 7468

Call-in: +1 253 215 8782

Triangle's Zoom Information

- ✓ **Collaborative members and observers (public)** will be able to enter the Zoom room **as early as 4:30 p.m.** on September 8, however the Collaborative Group meeting will not officially start until 5:00 p.m.
- ✓ You will be able to ask questions **verbally** and by **typing them in the chat box**.
- ✓ We encourage you to enter the Zoom room **at least 15 minutes prior to the start of the meeting** so we can address any technical issues.
- ✓ **To make sure you can connect to the Zoom room**, please test your connection in advance at <https://zoom.us/test> and also please attempt to enter the Zoom room early and if you encounter any issues or concerns contact Lucila Gambino, Triangle Associates, at: lgambino@triangleassociates.com or call/text 786-246-0637.

By the end of the meeting, members will have:

- Had the opportunity to hear a community leader's story and connection to the river.
- Received several updates on the Willamette Cove.
- Reached consensus on Shared Group Agreements.
- Had the opportunity to participate in breakout groups with community members, EPA, DEQ, and observers(public) and ask questions.

Notes:

- **Disclaimer on Recording:** Please be aware that when you join the Zoom meeting, your name and/or video may be displayed to other meeting participants, those watching via the YouTube livestream, and captured in the meeting recording. The meeting sections will be recorded and posted to the [Portland Harbor Collaborative Group YouTube Page](#). By joining the Zoom meeting, you are consenting to the recording and dissemination of the recording as noted above. If you would prefer not to share your name and/or video, please email phcollaborative@triangleassociates.com.
- **Observers/Public:** During the 7:00 – 8:00 p.m. timeframe, the public will have the opportunity to participate in breakout rooms and ask questions about several topics.

Time	Agenda Topic
1. OPTIONAL Meet & Greet and Intro to Consensus-Based Decision-Making	
4:30 – 5:00 p.m. 30 minutes	<ul style="list-style-type: none"> For Collaborative members, as you arrive, please say hello in the chat and share: <ul style="list-style-type: none"> What's one thing your organization/community is doing right now that you are really proud of and wish others knew about? If you are an observer (public), welcome. Please say hello in the chat as you join. Intro to Consensus-Based Decision-Making
2. Opening, Acknowledgements & Community Member Storytelling	
5:00 – 5:20 p.m. 20 minutes	<ul style="list-style-type: none"> Facilitator, Triangle Associates Acknowledgements and Storytelling: Community Member's Narrative on Connection to Portland Harbor (10 min), Wilma Alcock, Portland Harbor Community Coalition <ul style="list-style-type: none"> Acknowledges land and water and shares story on connection to the Willamette River to engage attendees, tap into the human element of this work, inspire why this group gathers, and create a voice for the Portland experience. Members to share listening appreciations in chat and/or verbally.
3. Materials, Updates & Introductions	
5:20 – 5:40 p.m. 20 minutes	<ul style="list-style-type: none"> Facilitator and Collaborative Members <ul style="list-style-type: none"> New members share your name, affiliation, and interest in being a part of the Collaborative (1-2 minutes each). Established members share your name and affiliation in the chat.
4. Presentation: Willamette Cove Updates	
5:40 – 6:20 p.m. 40 minutes	<ul style="list-style-type: none"> Part 1: Willamette Cove Updates (20 min), Jessica Terlikowski, City of Portland, Josh Bale, GSI Water Solutions and Dwight Leisle, Port of Portland Part 2: Working Group Updates (10 min), Alex Lopez, Portland Harbor Community Coalition and Jim McKenna, Oregon Governor's Office Q&A (10 mins) <p><i>If time runs out and your question has not yet been responded to, please attend the Zoom breakout room on this topic between 7:00 – 8:00 p.m.</i></p>
6:20 – 6:25 pm 5 minutes	Break

5. Decision Point: Members Reach Consensus & Adopt Shared Group Agreements	
6:25 – 6:55 p.m. <i>30 minutes</i>	<ul style="list-style-type: none"> • Facilitator (<i>10 mins</i>) <ul style="list-style-type: none"> ○ Present timeline for development of Final Draft Shared Group Agreements and consensus learning that has been offered to date. ○ Provide overview of process for today. ○ Ask a few members to share their thoughts on consensus decision-making. • Consensus & Adoption (<i>20 mins</i>) <ul style="list-style-type: none"> ○ Take 2 mins on your own to review Final Draft Group Agreements ○ Are there any final questions before adoption? ○ Member to share proposal for adoption. ○ Ask members for their support through polling. ○ Celebrate!
6. Wrap Up & Reminders	
6:55 – 7:00 p.m. <i>5 minutes</i>	<ul style="list-style-type: none"> • Facilitator <ul style="list-style-type: none"> ○ Next Collaborative Group Meeting is on Wednesday, December 8, 2021
<i>Meeting Adjourns at 7:00 p.m.</i>	
7. OPTIONAL: Breakout Rooms	
7:00 – 8:00 p.m. <i>60 mins</i>	<ul style="list-style-type: none"> • <i>Welcome and explain breakout rooms.</i> • <i>Breakout rooms will be focused on the following topics:</i> <ol style="list-style-type: none"> 1. Superfund 101 (<i>reoccurring topic</i>) 2. Overall Site & Project Area Updates – Highlight: Cathedral Park Project Area (<i>reoccurring topic</i>) 3. Willamette Cove Updates – Continued

Do you have ideas for other agenda topics?

- For other potential topics for the Collaborative Group to consider, please contact the facilitation team, Triangle Associates, at phcollaborative@triangleassociates.com, 503-891-3262 or type your idea into the chat during the meeting!

EPA Portland Harbor Website

- www.epa.gov/superfund/portland-harbor

DEQ Portland Harbor Website

- www.oregon.gov/deq/Hazards-and-Cleanup/CleanupSites/Pages/Portland-Harbor.aspx

Portland Harbor Superfund Site Collaborative Group Proposed Shared Group Agreements (v. 7-8-2021)

“Group agreements are a useful tool for getting your group off to the right start and keeping it on track. They help a group to come to an agreement on how it will work together respectfully and effectively. This in turn enables people to interact more cooperatively and maintain respect for each other. Making these decisions as a group is far more empowering than having a facilitator set out ‘rules’ for everyone to follow.”

People are much more likely to respect and implement an agreement that they have had input on. When problems and conflicts arise, group members will be able to refer to these agreements.

The following shared group agreements were developed by the Collaborative Group members for your review and adoption. The facilitation team will distribute this document three weeks in advance of September 8, 2021 and look to the members to reach consensus during the meeting.

1. **Participate!** Be present, encourage each person to participate in their own way, and recognize that people have different levels of comfort with sharing.
2. **Take space, make space.** *Listeners:* Take space as your contributions are very welcome. *More talkative people:* Be mindful and take a breath before speaking.
3. **Listen to understand, not to respond.** If you do not agree or are uncertain about a comment, ask a question to explore areas of uncertainty and listen respectfully.
4. **Address the idea, not the person.** Treat each other with respect and dignity.
5. **Cultivate a brave space.** Encourage dialogue, celebrate difference, lean into discomfort, and hold each person accountable to do the work of sharing lived experiences in a productive and creative way.
6. **Be willing to learn and grow together.** Identify where learning edges are and be willing to grapple with challenging ideas to gain deeper understanding of topics.
7. **Be mindful of systems of oppression that affect everyone.** Have awareness and be open to discussing how your social group memberships/identities (race, class, gender, dis/ability status, power dynamics etc.) impacts you and others to participate.
8. **Understand words affect others and speak with care.** If you learn that something you have said was disrespectful or exclusive, listen carefully and try to acknowledge that perspective in the future.
9. **Check-in with each other and the facilitation team.** Help stick to schedule and on agenda or negotiate alternative timeframes to discuss as this will encourage cohesion and building rapport among the group.
10. **Practice self-care:** Take care and advocate for your needs (drink water, stretch, bio breaks, etc.).

Welcome!

Portland Harbor Collaborative Group

Meet & Greet

Wednesday, September 8, 2021
4:30 - 5:00 p.m.

What's one thing your community/organization is doing that you are really proud of and wish others knew about?

Photo Credit, Lucila Gambino

This meeting is being recorded and sections will be posted to the Portland Harbor Collaborative YouTube Page.

1

1

Collaborative Members:

Please change your Zoom name to:

Member, Your Name, Your Organization/Affiliation,
Pronouns (optional)

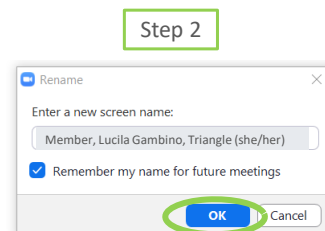
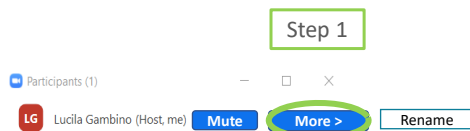
Example: Member, Lucila Gambino, Triangle (she/her)

Observers (public):

Please consider changing your Zoom name to:

Your Name, Your Organization/Affiliation, Pronouns
(optional)

Example: Annie Kilburg Smith, Triangle (she/her)



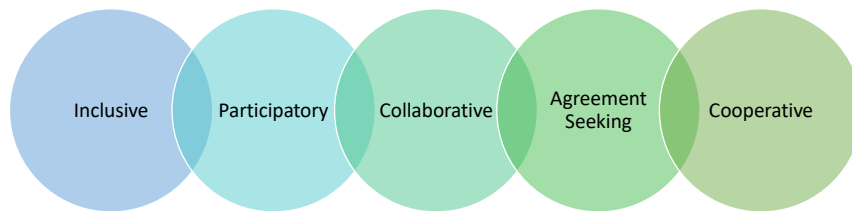
This meeting is being recorded and sections will be posted to the Portland Harbor Collaborative YouTube Page.

2

2

What is Consensus Decision-Making?

Consensus decision-making is a group decision-making process in which *members develop and agree to support a decision in the best interest of the whole group or a common goal.*

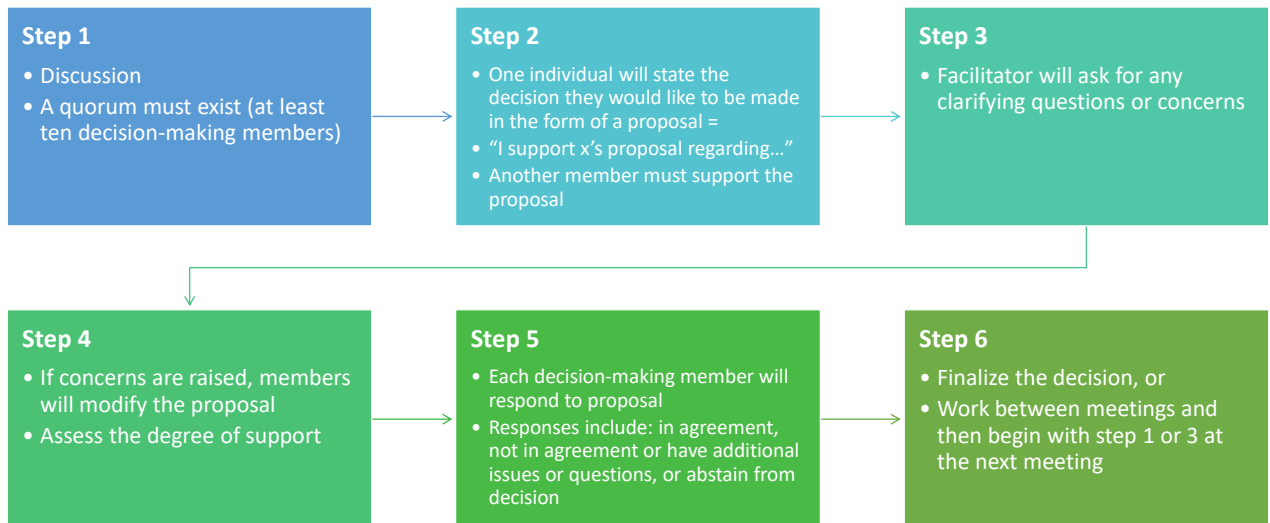


This meeting is being recorded and sections will be posted to the Portland Harbor Collaborative YouTube Page.

3

3

How will we use Consensus today?



This meeting is being recorded and sections will be posted to the Portland Harbor Collaborative YouTube Page.

4

4

Portland Harbor Superfund Site Collaborative Group

Wednesday, September 8, 2021

5:00 - 7:00 p.m.

Optional sections to occur between 4:30 - 5:00 and 7:00 – 8:00 p.m.

Photo Credit, EPA

This meeting is being recorded and sections will be posted to the Portland Harbor Collaborative YouTube Page.

5

5

Collaborative Members:

Please change your Zoom name to:

Member, Your Name, Your Organization/Affiliation, Pronouns (optional)

Example: Member, Lucila Gambino, Triangle (she/her)

Observers (public):

Please consider changing your Zoom name to:

Your Name, Your Organization/Affiliation, Pronouns (optional)

Example: Annie Kilburg Smith, Triangle (she/her)

Step 1

Participants (1)

LG

Lucila Gambino (Host, me)

Mute

More >

Rename

Step 2

Rename

Enter a new screen name:

Member, Lucila Gambino, Triangle (she/her)

☒ Remember my name for future meetings

OK

Cancel

This meeting is being recorded and sections will be posted to the Portland Harbor Collaborative YouTube Page.

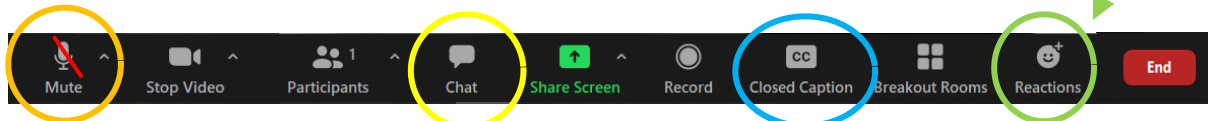
6

6

Collaborative Members:

If you have a **technical problem** or want to **type a question**, please type them in the chat!

If you want to **ask a question verbally**, please click the 'Reactions' icon and choose 'Raise Hand' and we will call on you.



Please **keep yourself on mute** unless you are speaking.

Click and choose 'Show Subtitle' if you would like to **view closed captions in English** during the meeting.

This meeting is being recorded and sections will be posted to the Portland Harbor Collaborative YouTube Page.

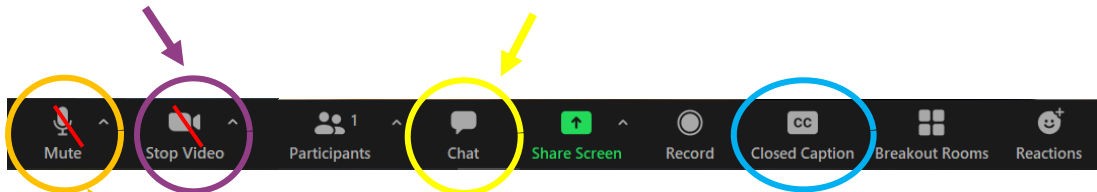
7

7

Observers (public):

Keep your **camera off** until breakout rooms at 7:00 p.m.

- **Technical Problems:** Type them in the chat.
- **Questions:** During the 5-7 pm portion, **please hold questions** until we move to the breakout groups where questions from observers will be addressed.



Please **keep yourself on mute**.

Click and choose 'Show Subtitle' if you would like to **view closed captions in English** during the meeting.

This meeting is being recorded and sections will be posted to the Portland Harbor Collaborative YouTube Page.

8

8

Opening & Storytelling

Community Member's Narrative and Connection to Portland Harbor



This meeting is being recorded and sections will be posted to the Portland Harbor Collaborative YouTube Page.

9

9



Photo credit: Wilma Alcock

Wilma Alcock

Portland Harbor Community Coalition (PHCC)

This meeting is being recorded and sections will be posted to the Portland Harbor Collaborative YouTube Page.

10

10

Agenda, Materials & Introductions

Annie Kilburg Smith & Lucila Gambino

Facilitators,

Triangle Associates



Photo credit, Microsoft PowerPoint

This meeting is being recorded and sections will be posted to the Portland Harbor Collaborative YouTube Page.

11

11

Tonight's Agenda

5:00 – 6:20 p.m.

- Opening & Storytelling
- Agenda, Materials & Introductions
- Presentation: Willamette Cove Updates
- *Break*

6:25 – 7:00 p.m.

- **Decision Point for Collaborative Members:**
Reach Consensus and Adopt Shared Group Agreements
- Wrap Up & Reminders

7:00 – 8:00 p.m.

Optional Breakout Rooms

- Superfund 101
- Overall Site and Project Area Updates – Highlight: Cathedral Park Project Area
- Willamette Cove Updates – Continued

This meeting is being recorded and sections will be posted to the Portland Harbor Collaborative YouTube Page.

12

12

Materials

Resources and documents can be found on: **OneDrive**

- Meeting Packet:
 - Agenda, Main Presentation Slides, Final Draft Shared Group Agreements, Site Factsheet & EPA/DEQ Organizational Charts
- Meeting Summary (*after the meeting*)



Photo Credit, Unsplash

This meeting is being recorded and sections will be posted to the Portland Harbor Collaborative YouTube Page.

13

13

Updates on Membership

- **Working Parties/Performing Responsible Parties (PRPs)**
 - Conducted Listen and Learns with eight PRPs since March
 - Two are at the table, others have decided to remain as observers
- **Community Groups**
 - Targeted email and phone outreach to Community Leaders Group (CLG) members
 - Target email outreach with several groups recommended by Steering Committee
- **Tribal Outreach:**
 - EPA is working to send Formal Council letters to the Five Tribes (Confederated Tribes of the Grand Ronde, Confederated Tribes of the Siletz Indians, Confederated Tribes of the Umatilla Indian Reservation, Confederated Tribes of Warm Springs, Nez Perce Tribe) and the Confederated Tribes and Bands of the Yakama Nation

This meeting is being recorded and sections will be posted to the Portland Harbor Collaborative YouTube Page.

14

14

Collaborative Membership Stipends and Resources Inquiry

Goal: Acquire funding by the end of 2021 for:

- Collaborative members' participation in Collaborative Group meetings and closing the digital divide, as well as for
- in-person meeting costs such as transportation, food, and childcare.



This meeting is being recorded and sections will be posted to the Portland Harbor Collaborative YouTube Page.

15

15

Funding Reasoning & Next Steps

Why?

- **Request from Steering Committee:** This is a priority shared by community groups, neighborhoods, etc. over the past three years and EPA is legally not able to satisfy this request
- **Currently Volunteering:** Many members continue to volunteer on this long-term effort
- **Equity:** Providing resources is an equitable practice, especially for participation of Black, Indigenous and People of Color, as well as environmental justice communities

Next Steps

- **Share Suggestions Today:** Now in the chat or verbally: *For example, grants (similar to how the Duwamish Roundtable provided stipends), private funding, etc.*
- **Between Sept – Dec Meetings:** The facilitation team will follow up with members after today per the Steering Committee's request
- **Contact Us:** If you have ideas or are someone that can provide funding opportunities, email us at phcollaborative@triangleassociates.com

This meeting is being recorded and sections will be posted to the Portland Harbor Collaborative YouTube Page.

16

16

New Collaborative Member Introductions

New Members (30 secs to 1 min each)

- Share your name and affiliation.
- What is your motivation or passion for being a member of this group?

Returning Members & Conveners (EPA & DEQ)

- Share your name and affiliation in the chat.



This meeting is being recorded and sections will be posted to the Portland Harbor Collaborative YouTube Page.

17

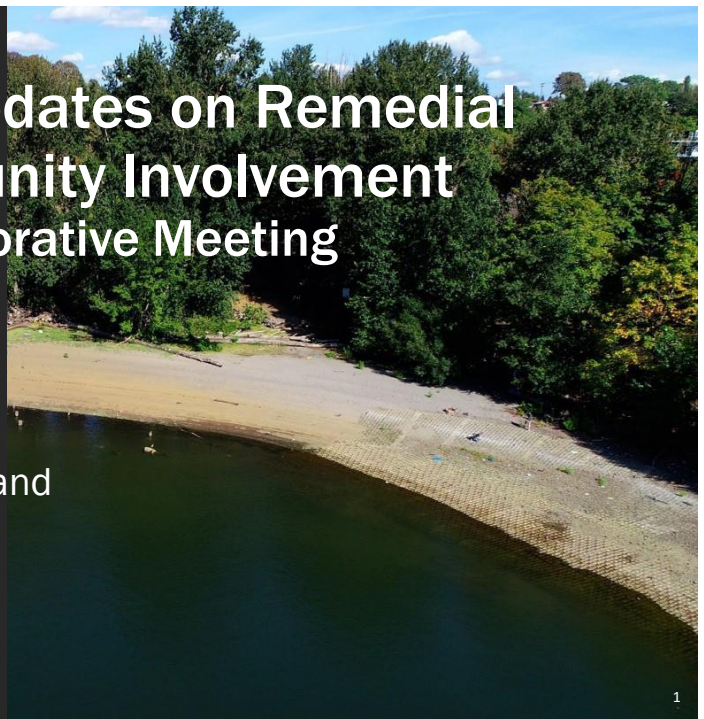
17

Willamette Cove Updates on Remedial Design and Community Involvement Portland Harbor Collaborative Meeting September 8, 2021

Josh Bale, GSI

Dwight Leisle, Port of Portland

Jessica Terlikowski, City of Portland



1

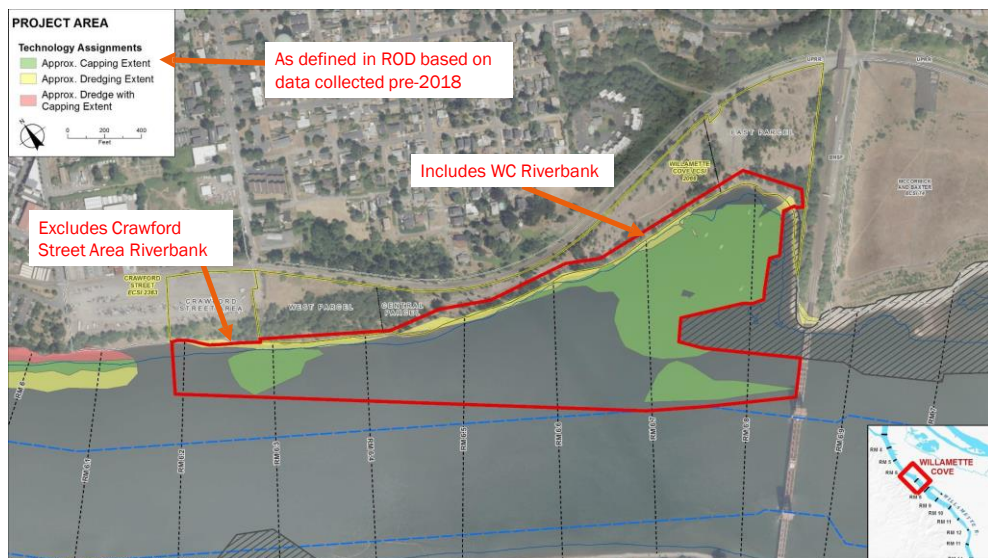
18

Agenda

- Remedial Design activities conducted to date
- Upcoming Remedial Design activities
- Community engagement conducted
- Opportunities for future community involvement

19

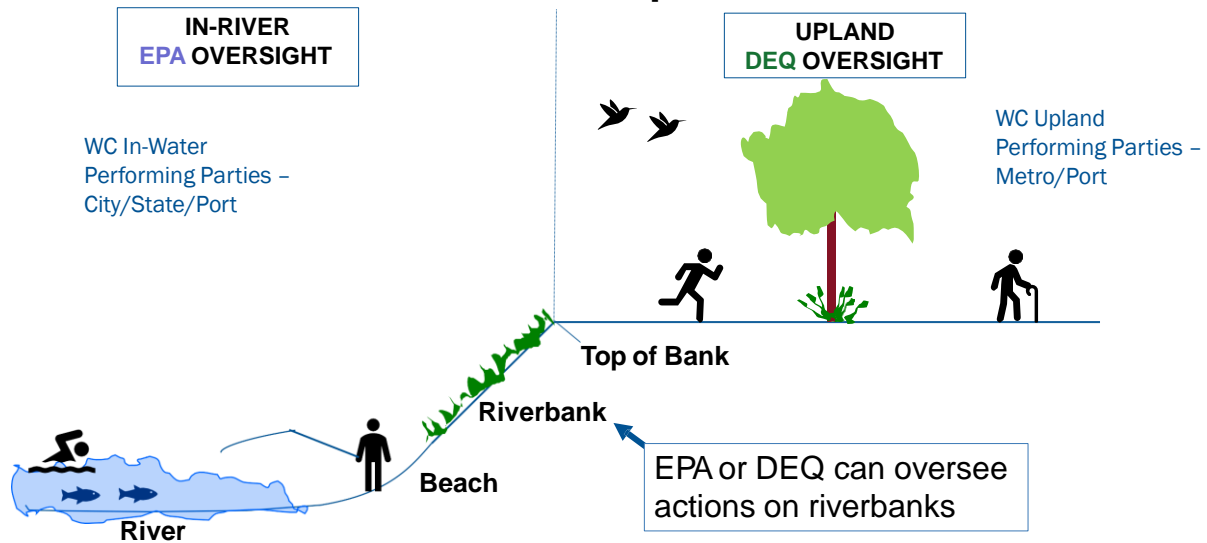
Project Area Overview



20

What are the roles of EPA & DEQ?

General Example



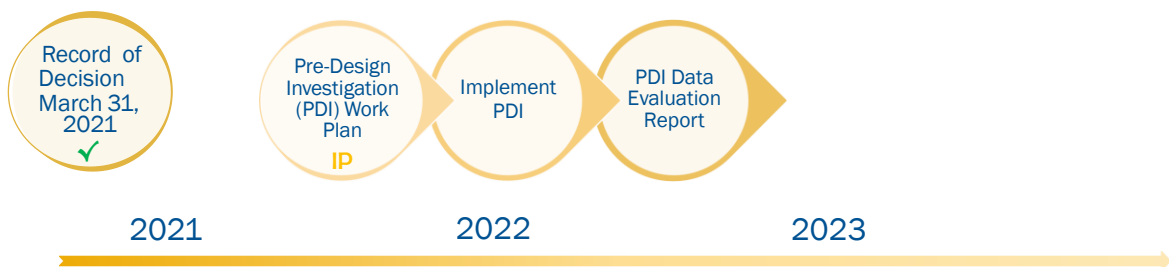
4

21

WC Upland Update

✓ : Complete
IP : In Progress

PRE- DESIGN (DATA COLLECTION)



Schedule Objective of Upland Remedial Design:

Complete Upland Remedial Design at about the same time as the In-Water Remedial Design (Early 2024), so that the Upland Remedial Action can be implemented about the same time as the In-Water Remedial Action

22

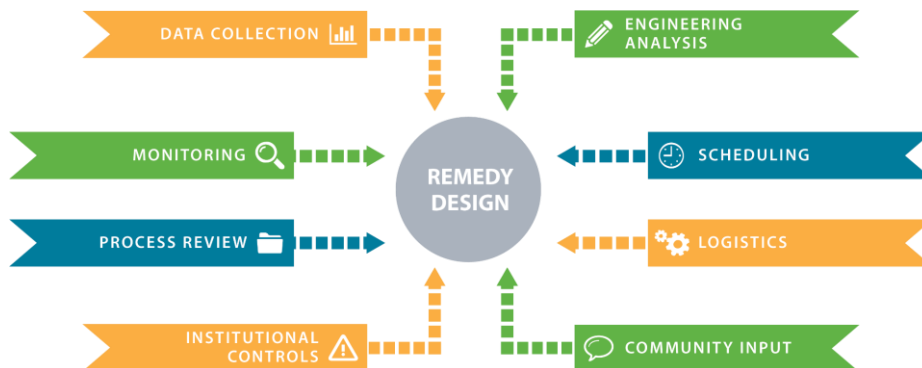


In-water Remedial Design: Where we are, and where we are going

6

23

Remedial Design refresher: What happens during this process?



24

In-water Overall Design Process

✓ : Complete
IP : In Progress
👤 : Public Involvement

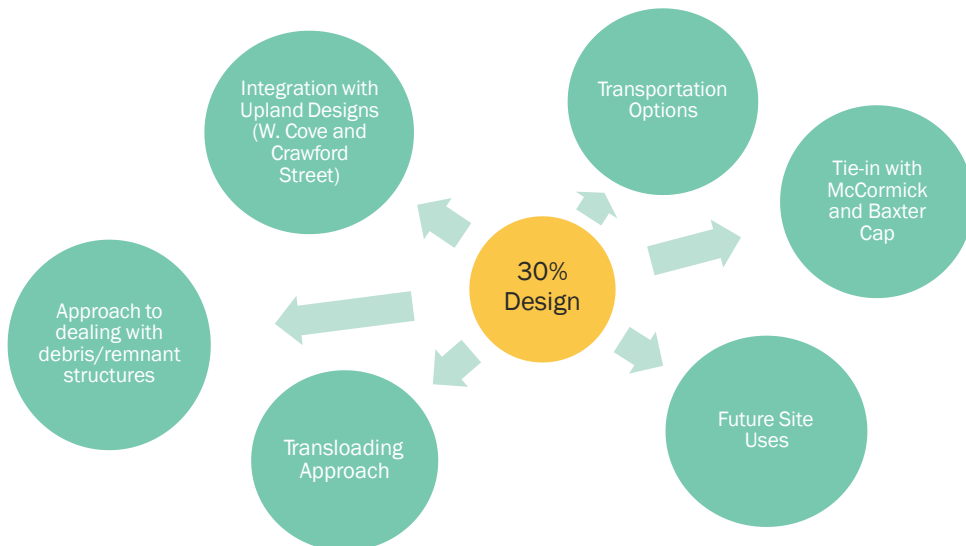


CSI Water Solutions, Inc.

8

25

Major Decisions / Considerations Upcoming



CSI Water Solutions, Inc.

9

26



Community Engagement

10

27

How community has been involved to date

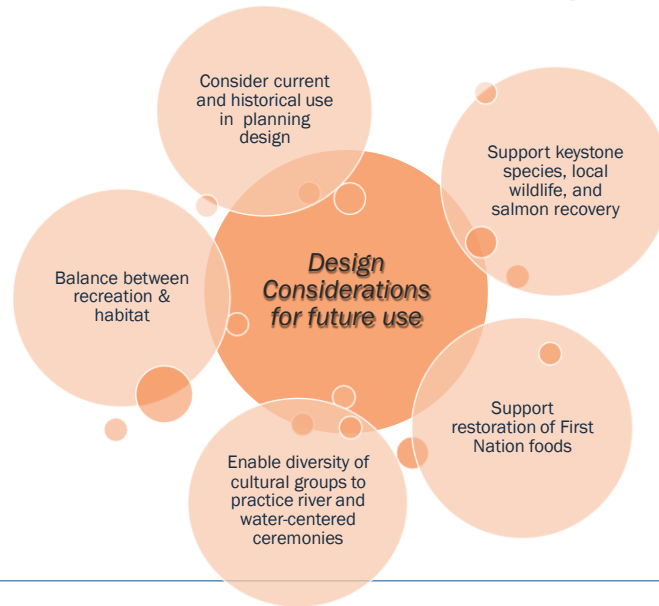
- Contracting processes
 - WC roundtable facilitator
 - Remedial design contractor
 - Jobs forecasting analysis
- Community input workshops
 - Future use of river and shoreline
 - Cultural practices, recreation, & habitat
 - Cleanup material transport



Photo credit:
www.greatlakesmud.org/shedding.html

28

What we heard from community workshops

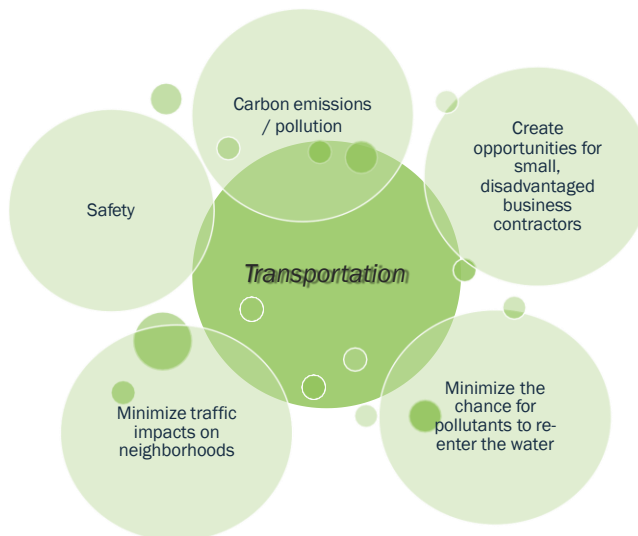


CSI Water Solutions, Inc.

12

29

What we heard from community workshops



CSI Water Solutions, Inc.

13

30

Upcoming in-water topics for engagement

- Pre-Design Investigation results
- Observation of upcoming sampling events
- 30% Design topics which may include:
 - Possible upland transload facility
 - Removal of sunken barge and approaches
 - Controls implemented during remedy construction
 - Long-term site monitoring
- Institutional Controls specific to the site



31

Get involved!

- Join the Willamette Cove Working Group!
- Opportunity to co-create community activities related to remedial design
- Contact jessica.Terlikowski@portlandoregon.gov for more information



32

Questions?

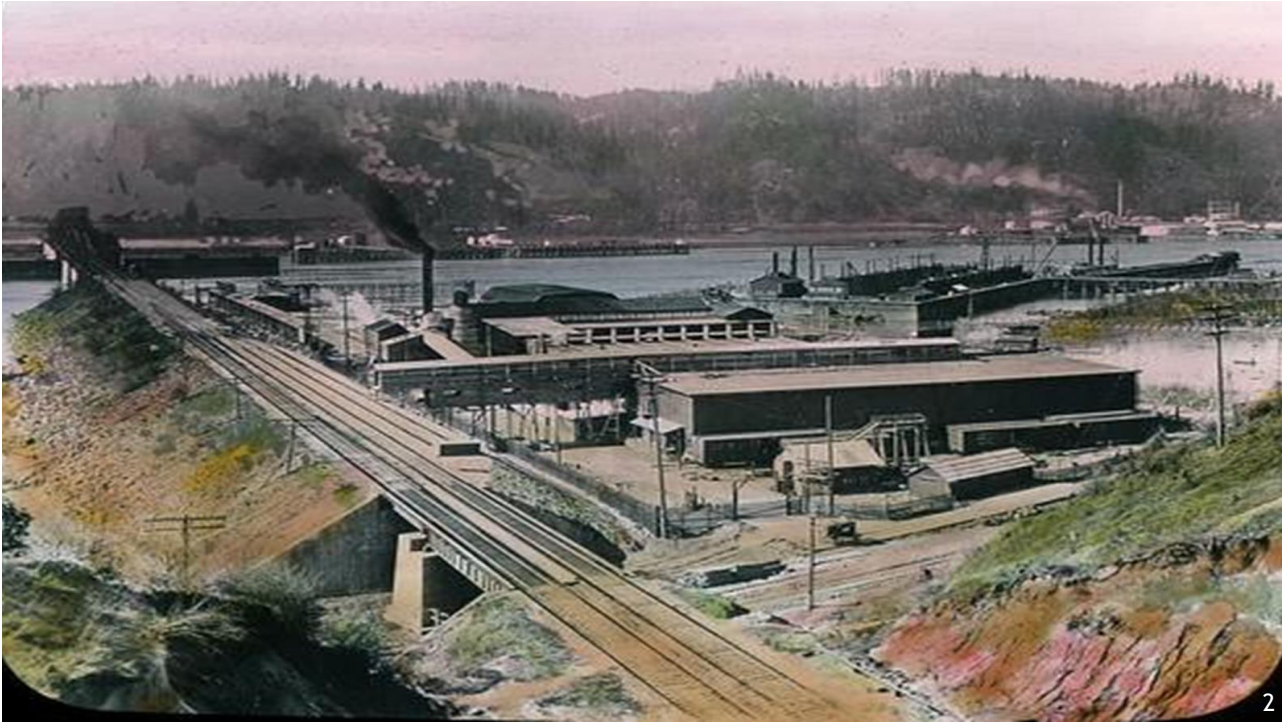
33

Willamette Cove Working Group

Alex Lopez (Portland Harbor Community Coalition)
Jim McKenna (Office of Governor Kate Brown)

1

34



35

WC Round Table: History

Willamette Cove Round Table:

- Grew out of community-initiated engagement with City, Port of Portland, Metro, and the State of Oregon on public involvement, inclusive procurement & community benefits tools in relation to Willamette Cove, Terminal 4, & Portland Harbor
- Round Table was established just for In-Water Remedial Design (RD), performed by State, City and Port of Portland
- Co-convened monthly meetings with community
- Discussed both RD and community benefits tools and concepts

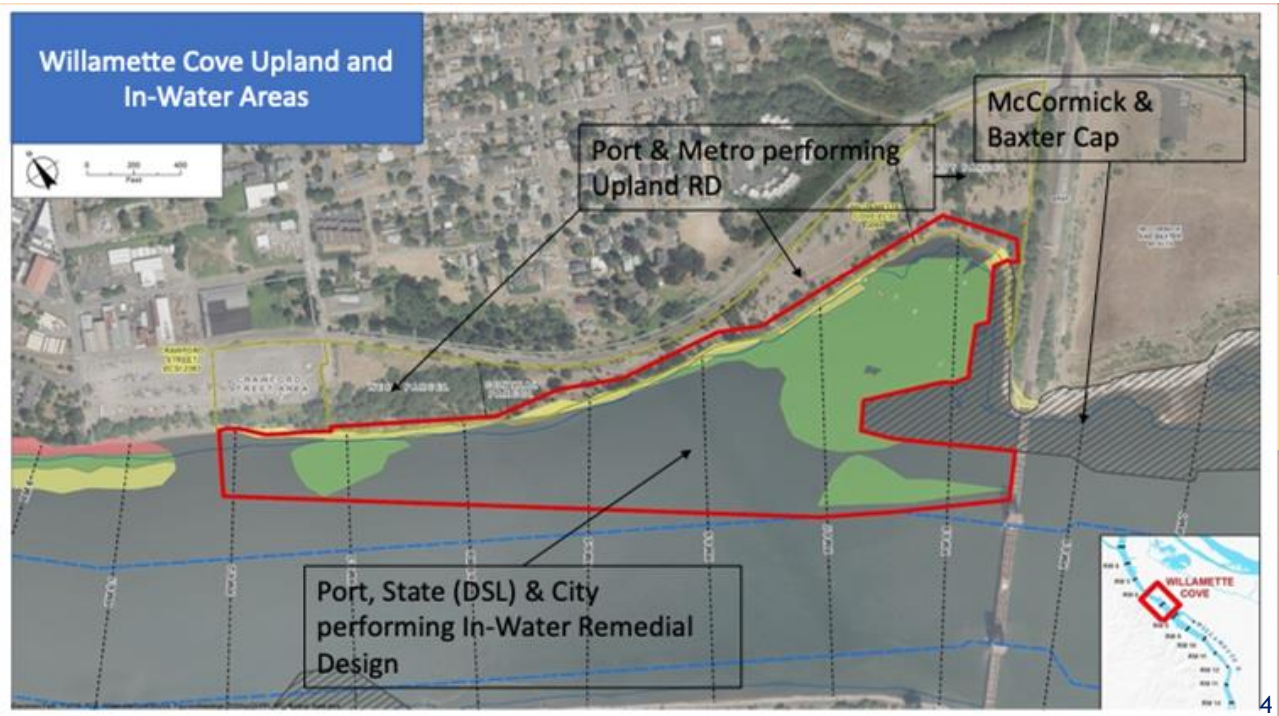
Willamette Cove Working Group:

- Replaces the Willamette Cove Round Table
- Expanded to include both In-Water and Upland RD in response to community request for overarching structure (a part of the Portland Harbor Collaborative)
- Includes upland RD work performed by Port and Metro



3

36



37

WC Working Group Purpose

- Focuses on RD processes for In-Water and Uplands
- Provides a consolidated process and opportunities for public involvement in both the In-Water and Upland RD processes
- Facilitates environmental justice and accountability in the remedial design and cleanup process
- Provides forum for discussion and development of community benefits tools specific to Willamette Cove parallel to harbor-wide Community Collaborative discussions



5

38

Executive Committee

- Serves as a decision-making and project management body to guide the efforts of the Willamette Cove Working Group
- Ensures the Willamette Cove In-Water and Upland remedial design work addresses equitable outcomes for our most impacted communities

Functions

- Working Group Management
 - Setting schedule and agenda for Working Group
- Project Stewardship
 - Guide and monitor the progress of Working Group Projects
- Deliverables
 - Create work plan and schedule of project deliverables
- Organizing
 - Setup of workgroups or subcommittees



6

39

Executive Steering Committee Membership

From the Executive Steering Committee Charter

- BIPOC Communities with historical or current connections to the river
- Communities who eat fish and shellfish from Willamette River
- Communities who are or who support individuals living outside/along the river
- Communities whose quality of life and well-being is tied to Willamette Cove

Current Membership Includes

- Community Representatives
- Labor Groups
- City of Portland
- Port of Portland
- Metro
- State of Oregon

The Executive Steering Committee and Working Group are seeking additional community members in order to ensure broad-based representation.

7

40

Break

5-minute break

Stretch, grab a snack, drink water

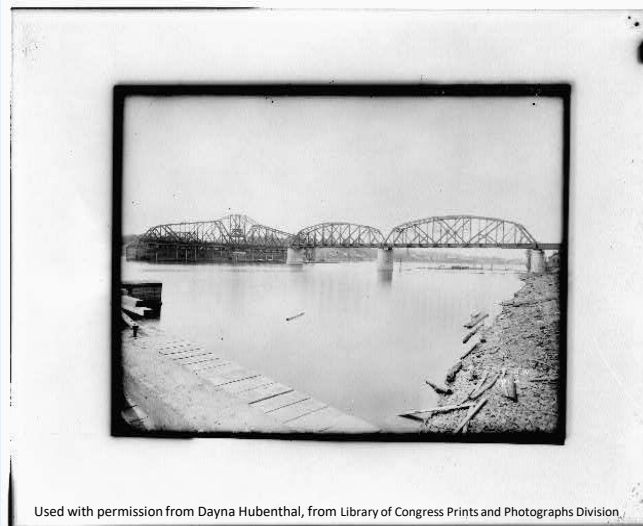
Photo Credit, Microsoft Powerpoint

This meeting is being recorded and sections will be posted to the Portland Harbor Collaborative YouTube Page.

41

41

Burlington Northern Railroad Bridge, Spanning Willamette River at River Mile 6.9, 1908



Used with permission from Dayna Hubenthal, from Library of Congress Prints and Photographs Division

We are currently taking a break. We will return at xx

This meeting is being recorded and sections will be posted to the Portland Harbor Collaborative YouTube Page

42

42

Decision Point: Proposed Shared Group Agreements



Photo Credit, EPA

This meeting is being recorded and sections will be posted to the Portland Harbor Collaborative YouTube Page.

43

43

Group Agreements



What are they?

- A useful tool for getting your meetings off to the right start and keeping them on track.
- Enables people to interact more cooperatively and maintain respect for each other.

How will we use them?

- The facilitator will refer to these agreements.

Why do we need them?

- Making these decisions as a group is far more empowering than having a facilitator set out 'rules' for everyone to follow.

44

44

Proposed Shared Group Agreements

1. Participate!
2. Take space, make space.
3. Listen to understand, not to respond.
4. Address the idea, not the person.
5. Cultivate a brave space.
6. Be willing to learn and grow together.
7. Be mindful of systems of oppression that affect everyone.
8. Understand words affect others and speak with care.
9. Check-in with each other and the facilitation team.
10. Practice self-care.

This meeting is being recorded and sections will be posted to the Portland Harbor Collaborative YouTube Page.

45

45

Timeline



This meeting is being recorded and sections will be posted to the Portland Harbor Collaborative YouTube Page.

46

46

How will we use Consensus today?



This meeting is being recorded and sections will be posted to the Portland Harbor Collaborative YouTube Page.

47

47

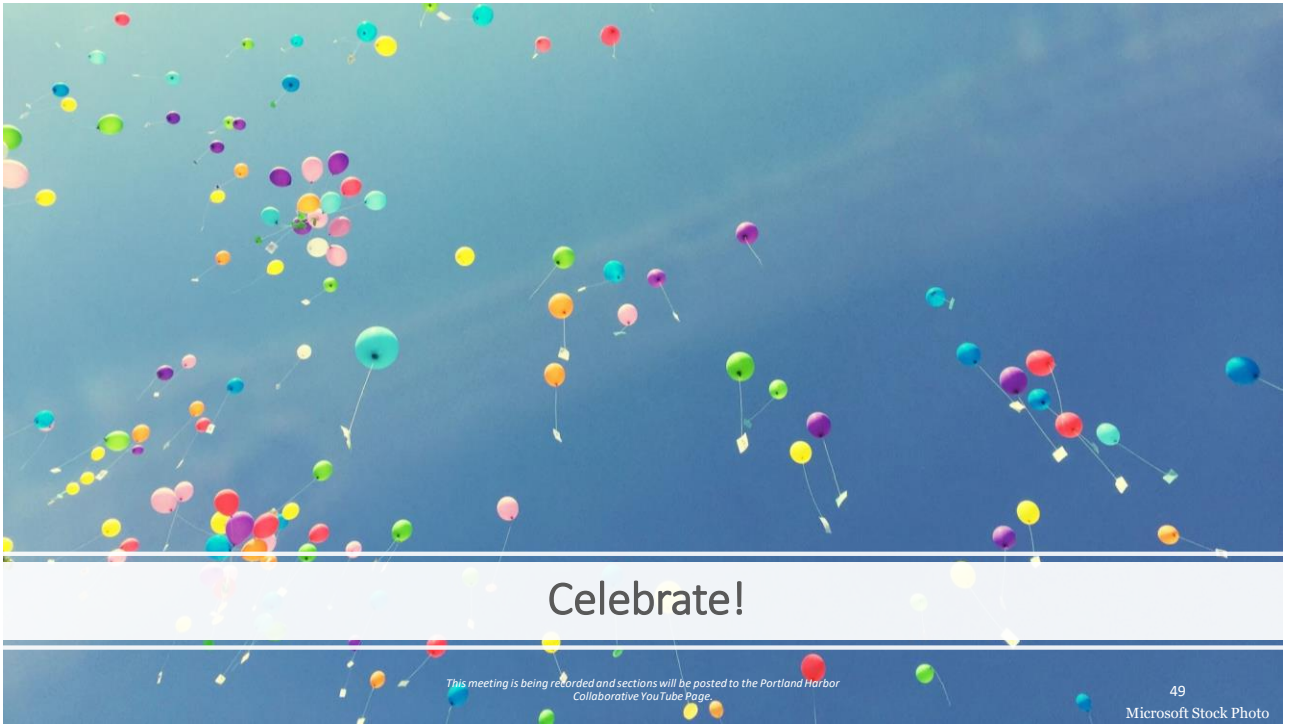
Proposed Shared Group Agreements

1. **Participate!** Be present, encourage each person to participate in their own way, and recognize that people have different levels of comfort with sharing.
2. **Take space, make space.** Listeners: Take space as your contributions are very welcome. More talkative people: Be mindful and take a breath before speaking.
3. **Listen to understand, not to respond.** If you do not agree or are uncertain about a comment, ask a question to explore areas of uncertainty and listen respectfully.
4. **Address the idea, not the person.** Treat each other with respect and dignity.
5. **Cultivate a brave space.** Encourage dialogue, celebrate difference, lean into discomfort, and hold each person accountable to do the work of sharing lived experiences in a productive and creative way.
6. **Be willing to learn and grow together.** Identify where learning edges are and be willing to grapple with challenging ideas to gain deeper understanding of topics.
7. **Be mindful of systems of oppression that affect everyone.** Have awareness and be open to discussing how your social group memberships/identities (race, class, gender, dis/ability status, power dynamics etc.) impacts you and others to participate.
8. **Understand words affect others and speak with care.** If you learn that something you have said was disrespectful or exclusive, listen carefully and try to acknowledge that perspective in the future.
9. **Check-in with each other and the facilitation team.** Help stick to schedule and on agenda or negotiate alternative timeframes to discuss as this will encourage cohesion and building rapport among the group.
10. **Practice self-care.** Take care and advocate for your needs (drink water, stretch, bio breaks, etc.).

This meeting is being recorded and sections will be posted to the Portland Harbor Collaborative YouTube Page.

48

48



49

Upcoming Meetings

Time	Topic
September 16	Steering Committee
October TBD	Cathedral Park Project Area Working Group
October 13	Community Advisory Group (CAG) Meeting
October 22	EPA Casual Community Coffee Chat <i>(with EPA Remedial Project Managers Madi Novak and Hunter Young)</i>
Ongoing	Collaborative Member Outreach & Listen and Learn Discussions
December 8	Next Collaborative Group Meeting!
-???	Are we missing anything? If yes, please share in chat

This meeting is being recorded and sections will be posted to the Portland Harbor Collaborative YouTube Page.

50

50

Questions or comments?

If you have any questions or comments after the meeting, please email the facilitation team at:

phcollaborative@triangleassociates.com

This meeting is being recorded and sections will be posted to the Portland Harbor Collaborative YouTube Page.

51

51

Virtual Breakout Rooms

Room 1: Superfund 101

- *New to the Portland Harbor community*
- *Want to learn more about Superfund history and terminology*

Room 2: Overall Site & Project Area Updates, Highlight: Cathedral Park

- *Want to hear status updates for all Project Areas*
- *Want to hear specific updates on the Cathedral Park Project Area*

Room 3: Willamette Cove Updates Continued

- *If your questions were not answered during the main presentation*
- *Additional questions/comments to ask*

This meeting is being recorded and sections will be posted to the Portland Harbor Collaborative YouTube Page.

52

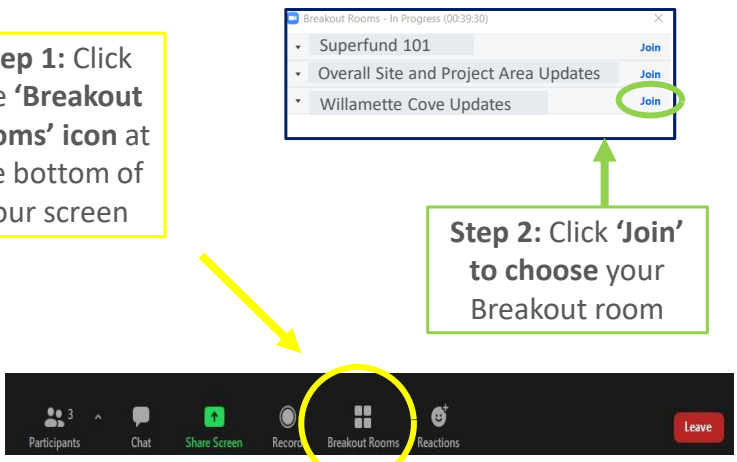
52

Breakout Room Zoom Tips

Step 1: Click the 'Breakout Rooms' icon at the bottom of your screen

Step 2: Click 'Join' to choose your Breakout room

****Repeat Steps 1 and 2 to jump from one Breakout Room to another**



Participants Chat Share Screen Record Breakout Rooms Reactions Leave

Breakout Rooms - In Progress (00:39:30)

- Superfund 101 Join
- Overall Site and Project Area Updates Join
- Willamette Cove Updates Join

This meeting is being recorded and sections will be posted to the Portland Harbor Collaborative YouTube Page.

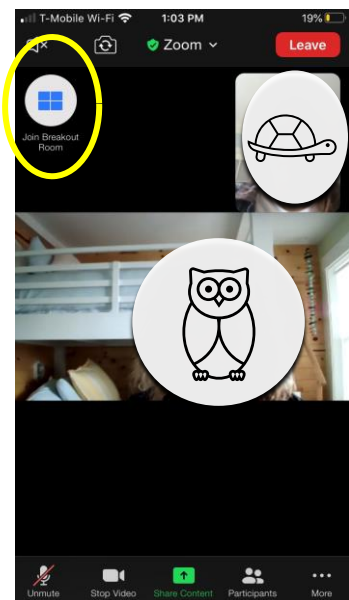
53

53

Zoom Tips (phone)

Steps

1. Tap the screen with your finger
2. Locate the 'Join Breakout Room' pop-out found in the top left corner of your screen
3. Click 'Join Breakout Room'
4. Select to join one of the 3 rooms



This meeting is being recorded and sections will be posted to the Portland Harbor Collaborative YouTube Page.

54

54

Appendix

This meeting is being recorded and sections will be posted to the Portland Harbor Collaborative YouTube Page.

55

55



This meeting is being recorded and sections will be posted to the Portland Harbor Collaborative YouTube Page.

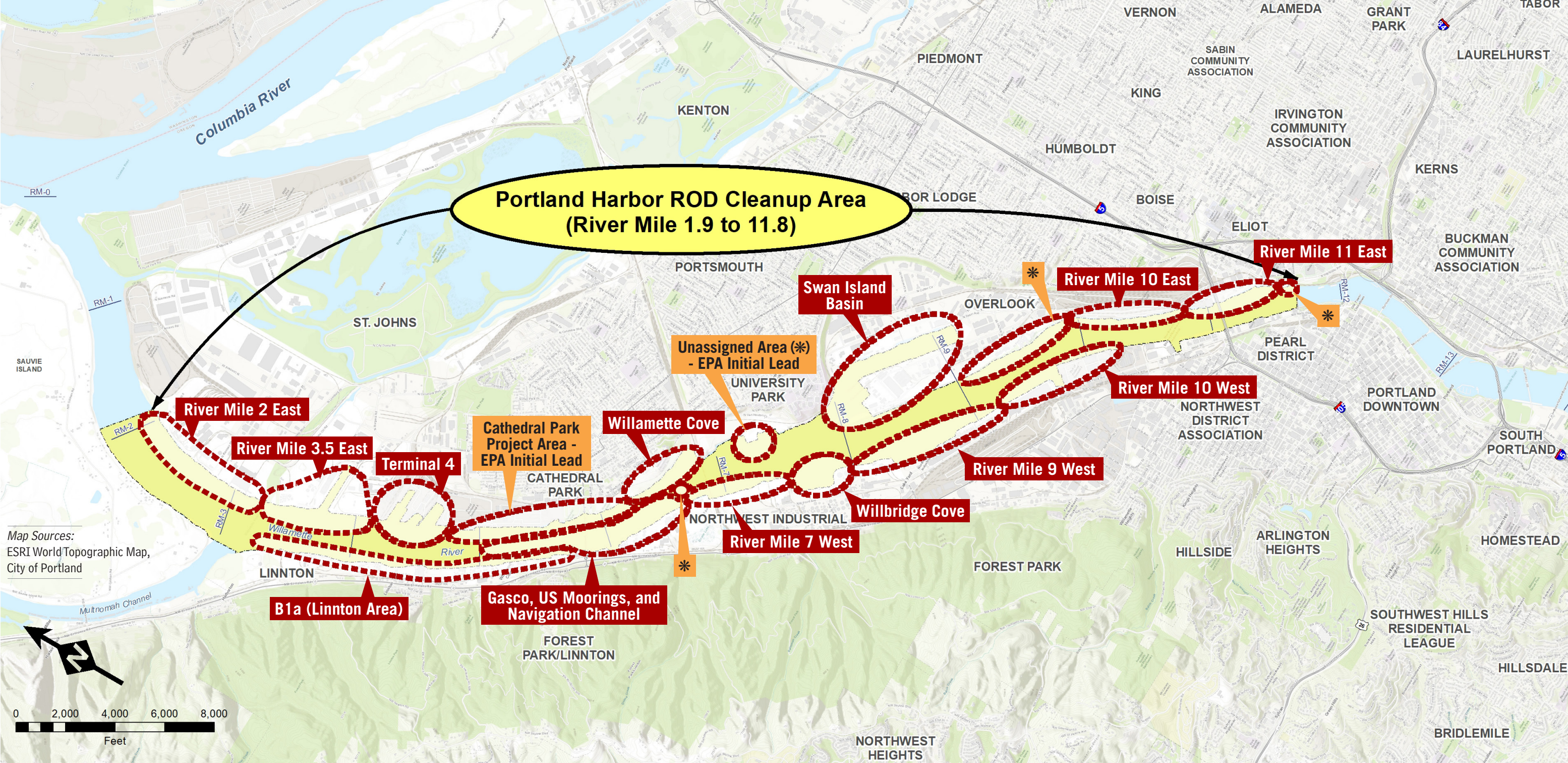
56

56

PORTLAND HARBOR SUPERFUND SITE UPDATES

SEPTEMBER 2021

OVERVIEW The in-river portion of the Portland Harbor Superfund Site spans about 10 miles of the Lower Willamette River in Portland, OR. EPA released a final cleanup plan (also called the Record of Decision or ROD) in January 2017 to address contamination in the sediment, surface water, and groundwater that poses an unacceptable risk to human health and the environment. All of the acres designated for active in-water remediation at the Site are now in remedial design. For project areas where EPA is listed as the initial lead, EPA continues to seek parties to sign up to perform remedial design of the remedy. This document provides a general project update.



Map Sources:
ESRI World Topographic Map,
City of Portland

Red outlines signify that working parties are conducting remedial design with EPA oversight. For unassigned areas and the Cathedral Park Project Area (labeled in orange), EPA is conducting the initial remedial design sampling. *Please see reverse page for more information.*

This shaded area indicates areas where only monitored natural recovery is planned to occur, per the Record of Decision.

QUESTIONS?

Please visit EPA's Portland Harbor website at www.epa.gov/superfund/portland-harbor

Contact Laura Knudsen (EPA Community Involvement Coordinator) at knudsen.laura@epa.gov or 206-553-1838.

WHAT ABOUT SOURCE CONTROL?

The term source control refers to controlling sources of contamination that are entering the Portland Harbor Superfund Site from upriver and lands along the river. **The Oregon Department of Environmental Quality (DEQ)** oversees source control and works closely with EPA. To date, DEQ has completed work on 111 of 174 sites identified as requiring source control within the study area and is currently working on 51 other sites. Visit DEQ's interactive source control map here: www.oregon.gov/deq/FilterDocs/PortlandHarborMap.pdf

Portland Harbor Superfund Site Remedial Design Status (September 2021)

Project Area	Sufficiency Assessment	Preliminary Design Investigation	Basis of Design Report	Remedial Design Work Plan	Preliminary Remedial Design (30%)	Intermediate Remedial Design (60%)	Pre-Final and Final Remedial Design (95%, 100%)
B1a							
Gasco							
US Moorings							
Nav Channel							
River Mile 7 West (Bayer)							
River Mile 7 West (Arkema)							
Willbridge Cove							
River Mile 9 West							
River Mile 10 West							
River Mile 11 East							
River Mile 10 East							
Swan Island Basin							
Willamette Cove							
Cathedral Park Project Area							
Terminal 4							
River Mile 3.5 East							
River Mile 2 East							
Unassigned Areas							

KEY

- In Progress
- Complete
- Not Started
- Updated

Updated: September 2021

Additional Information on Signed Agreements and Orders for Remedial Design:

B1a (Linnton Area):

- **Summary:** Remedial design work is ongoing. Currently conducting the Pre-Design Investigation (PDI) in the field.
- **Working Parties:** Atlantic Richfield Company, BP Products North America, Inc., Brix Maritime Co., Exxon Mobil Corporation, and Kinder Morgan Liquids Terminals, LLC
- **Informal Public Feedback Opportunity:** Review conceptual design (*schedule under development*).
- **EPA Point of Contact:** Hunter Young, EPA Project Manager (young.hunter@epa.gov, 503-326-5020)

Gasco/US Moorings/Navigation Channel:

- **Summary:** Remedial design work is ongoing. All areas have completed Pre-Design Investigation (PDI) sampling and are waiting for the results. Gasco is currently working on the Basis of Design Report and the Preliminary Design Report.
- **Working Parties:** NW Natural
- **Informal Public Feedback Opportunity:** Review conceptual design in late 2021 or early 2022 for Gasco area (*estimated date*).
- **EPA Point of Contact:** Hunter Young, EPA Project Manager (young.hunter@epa.gov, 503-326-5020)

River Mile 7 West:

- **Summary:** Remedial design work is ongoing. Pre-Design Investigation (PDI) work plans are finalized and Phase 1 of PDI sampling is underway and will be completed in Fall 2021.
- **Working Parties:** Arkema, Inc., Bayer Crop Science, Inc.
- **Informal Public Feedback Opportunity:** Review conceptual design (*schedule under development*).
- **EPA Point of Contact:** Madi Novak, EPA Project Manager (novak.elisabeth@epa.gov, 503-326-3277)

Willbridge Cove:

- **Summary:** Remedial design work is ongoing. Pre-Design investigation sampling is anticipated for Summer and Fall 2021.
- **Working Parties:** Chevron U.S.A Inc., Kinder Morgan Liquids Terminals LLC, McCall Oil and Chemical Corporation, Phillips 66 Company, and Shell Oil Company
- **Informal Public Feedback Opportunity:** Review conceptual design (*schedule under development*).
- **EPA Point of Contact:** Benjamin Leake, EPA Project Manager (leake.benjamin@epa.gov, 503-326-2859)

River Mile 9 West:

- **Summary:** Remedial design work is ongoing. Currently conducting field sampling. Sufficiency Assessment and the Pre-Design Investigation (PDI) work plan are finalized.
- **Working Parties:** FMC Corporation
- **Informal Public Feedback Opportunity:** Review conceptual design (*schedule under development*).
- **EPA Point of Contact:** Josie Clark, EPA Project Manager (clark.josie@epa.gov, 206-553-6239)

River Mile 10 West:

- **Summary:** Remedial design work is ongoing. Currently conducting field sampling. Sufficiency Assessment and the Pre-Design Investigation (PDI) work plan are finalized.
- **Working Parties:** General Electric Company
- **Informal Public Feedback Opportunity:** Review conceptual design (*schedule under development*).
- **EPA Point of Contact:** Josie Clark, EPA Project Manager (clark.josie@epa.gov, 206-553-6239)

River Mile 11 East:

- **Summary:** Remedial design work is ongoing. Phase I sampling has been completed and working parties are finalizing the Phase I Data Report.
- **Working Parties:** City of Portland, PacifiCorp, Cargill, Inc., CBS Corporation, DIL Trust, Glacier Northwest, Inc.
- **Informal Public Feedback Opportunity:** Review conceptual design in 2022 for River Mile 11 East area (*estimated date*).
- **EPA Point of Contact:** Hunter Young, EPA Project Manager (young.hunter@epa.gov, 503-326-5020)

River Mile 10 East:

- **Summary:** Remedial design work is ongoing. Sufficiency Assessment and the Pre-Design Investigation (PDI) work plan are finalized. PDI sampling is underway and the PDI evaluation report is expected in fall 2021.
- **Working Parties:** Union Pacific Railroad Company
- **Informal Public Feedback Opportunity:** Review conceptual design (*schedule under development*).
- **EPA Point of Contact:** Richard Francis, EPA Project Manager (francis.richard@epa.gov, 503-326-3363)

Swan Island Basin:

- **Summary:** Remedial design work is ongoing. The Pre-Design Investigation Work Plan and Sufficiency Assessment Report are under development.
- **Parties:** Daimler Trucks North America LLC, Vigor Industrial LLC, Cascade General, Inc., Shipyard Commerce Center LLC, State of Oregon, City of Portland, Port of Portland, and federal agencies.
- **Informal Public Feedback Opportunity:** Review conceptual design (*schedule under development*).
- **EPA Point of Contact:** Madi Novak, EPA Project Manager (novak.elisabeth@epa.gov, 503-326-3277)

Willamette Cove:

- **Summary:** Remedial design work is ongoing. Sufficiency Assessment and the Pre-Design Investigation (PDI) work plan are finalized. Phase 1 of PDI sampling is complete. Currently working on the PDI Evaluation Report.
- **Working Parties:** State of Oregon, City of Portland, Port of Portland, and settling federal agencies
- **Informal Public Feedback Opportunity:** Review conceptual design (*schedule under development*).
- **EPA Point of Contact:** Eva DeMaria, EPA Project Manager (demaria.eva@epa.gov, 206-553-1970)

Cathedral Park Project Area - EPA Initial Lead:

- **Summary:** EPA is currently conducting field sampling and continues to seek parties to sign up to perform remedial design.
- **Working Parties:** Currently EPA
- **Informal Public Feedback Opportunity:** Review conceptual design (*schedule under development*).
- **EPA Point of Contact:** Josie Clark, EPA Project Manager (clark.josie@epa.gov, 206-553-6239)

Terminal 4:

- **Summary:** Remedial design work is ongoing. Pre-Design Investigation sampling and Basis of Design Report are complete. Currently working on the Sufficiency Assessment and the Remedial Design Work Plan.
- **Working Parties:** Port of Portland
- **Informal Public Feedback Opportunity:** Review conceptual design in early 2022 (*estimated date*).
- **EPA Point of Contact:** Josie Clark, EPA Project Manager (clark.josie@epa.gov, 206-553-6239)

River Mile 3.5 East:

- **Summary:** Remedial design work is ongoing under a Unilateral Administrative Order (UAO). The Sufficiency Assessment and the Pre-Design Investigation (PDI) work plan are finalized. Design investigation sampling is underway.
- **Working Parties:** Schnitzer Steel Industries, Inc. and MMGL, LLC
- **Informal Public Feedback Opportunity:** Review conceptual design (*schedule under development*).
- **EPA Point of Contact:** Richard Francis, EPA Project Manager (francis.richard@epa.gov, 503-326-3363)

River Mile 2 East:

- **Summary:** Remedial design work is ongoing under a Unilateral Administrative Order (UAO). The Sufficiency Assessment and the Pre-Design Investigation (PDI) work plan are finalized. Design investigation sampling is underway.
- **Working Parties:** EVRAZ, Inc., NA
- **Informal Public Feedback Opportunity:** Review conceptual design (*schedule under development*).
- **EPA Point of Contact:** Richard Francis, EPA Project Manager (francis.richard@epa.gov, 503-326-3363)

Unassigned Areas - EPA Initial Lead:

- **Summary:** EPA has begun remedial design sampling and will continue sampling throughout fall 2021.
- **Working Parties:** Currently EPA
- **Informal Feedback:** Review conceptual designs (*schedule under development*).
- **EPA Point of Contact:** Hunter Young, EPA Project Manager (young.hunter@epa.gov, 503-326-5020)

Updates on Site-Wide Work:

Programmatic Institutional Control Implementation and Assurance Plan (PICIAP) and Information Management Plan (IMP):

- **Summary:** Institutional controls (ICs) is EPA’s term for activity and use limitations (such as fish advisories and zoning restrictions) to reduce people’s exposure to contamination. ICs are written into a PICIAP. Information management refers to the process of storing and displaying all environmental data and IC information for the Site. In November 2019, EPA signed an agreement with the City of Portland and State of Oregon to develop a site-wide PICIAP and IMP. The Needs Assessment Report was finalized in February 2021.
- **Working Parties:** City of Portland, State of Oregon
- **Input Opportunities:** For information, please contact Jessica Terlikowski, City of Portland, Community Engagement Coordinator (jessica.terlikowski@portlandoregon.gov, 503-865-6704) or Dawn Sanders, City of Portland, IMP Project Coordinator (dawn.sanders@portlandoregon.gov, 503-823-7263).
- **EPA Point of Contact:** Josie Clark, EPA Project Manager (clark.josie@epa.gov, 206-553-6239)

Upriver Reach Dioxin/Furan Sampling:

- **Summary:** The Upriver Reach is an approximately 12-mile stretch of the Willamette River upstream of the Portland Harbor Superfund Site, extending from roughly RM 16.6 to RM 28.4 (from about the Sellwood Bridge to above the Willamette Falls). The purpose of this sampling is to gather additional information about the background concentration of dioxins and furans in the Upriver Reach. EPA Region 10 and the Oregon Department of Environmental Quality are partnering to perform this sampling work. Sampling was completed in Summer 2021 and analysis is underway.
- **Working Parties:** Oregon Department of Environmental Quality, EPA
- **EPA Point of Contact:** Madi Novak, EPA Project Manager (novak.elisabeth@epa.gov, 503-326-3277)



UNITED STATES ENVIRONMENTAL PROTECTION AGENCY'S (EPA)

PORTLAND HARBOR SUPERFUND SITE STAFF



HUNTER YOUNG
UA, LINNTON, RM11 E, & GASCO RPM
YOUNG.HUNTER@EPA.GOV
503-326-5020



JOSIE CLARK
RM9 & 10 W, T4, & CATHEDRAL PARK RPM
CLARK.JOSIE@EPA.GOV
206-553-6239



MADI NOVAK
RM7 W, SWAN ISLAND BASIN RPM
NOVAK.ELISABETH@EPA.GOV
503-326-3277



RICHARD FRANCIS
RM10, 2 & 3.5 E RPM
FRANCIS.RICHARD@EPA.GOV
503-326-3363



CALEB SHAFFER
TEAM LEAD
SHAFFER.CALEB@EPA.GOV
503-326-5015



BENJAMIN LEAKE
WILLBRIDGE COVE RPM
LEAKE.BENJAMIN@EPA.GOV
503-326-2859



EVA DEMARIA
WILLAMETTE COVE RPM
DEMARIA.EVA@EPA.GOV
206-553-1970



LAURA KNUDSEN
**SITE-WIDE COMMUNITY
INVOLVEMENT COORDINATOR**
KNUDSEN.LAURA@EPA.GOV
206-643-4299

RPM: REMEDIAL PROJECT MANAGER
RM: RIVER MILE
UA: UNASSIGNED AREAS



OREGON DEPARTMENT OF ENVIRONMENTAL QUALITY'S (DEQ) PORTLAND HARBOR SUPERFUND SITE STAFF



SARAH GREENFIELD
IN-WATER COORDINATOR
SARAH.GREENFIELD@DEQ.STATE.OR.US
503-229-5245



DAVE LACEY
SOURCE CONTROL COORDINATOR
DAVE.LACEY@DEQ.STATE.OR.US
503-229-5354

DEQ REPRESENTATIVES



LAUREN WIRTIS
PUBLIC AFFAIRS SPECIALIST
LAUREN.WIRTIS@DEQ.STATE.OR.US
503-568-3295